



## Conceptual Layouts for Mid-Trunk EQ Improvements

City Commission Informational Meeting – May 23, 2024

# Two Sites within Tower Park



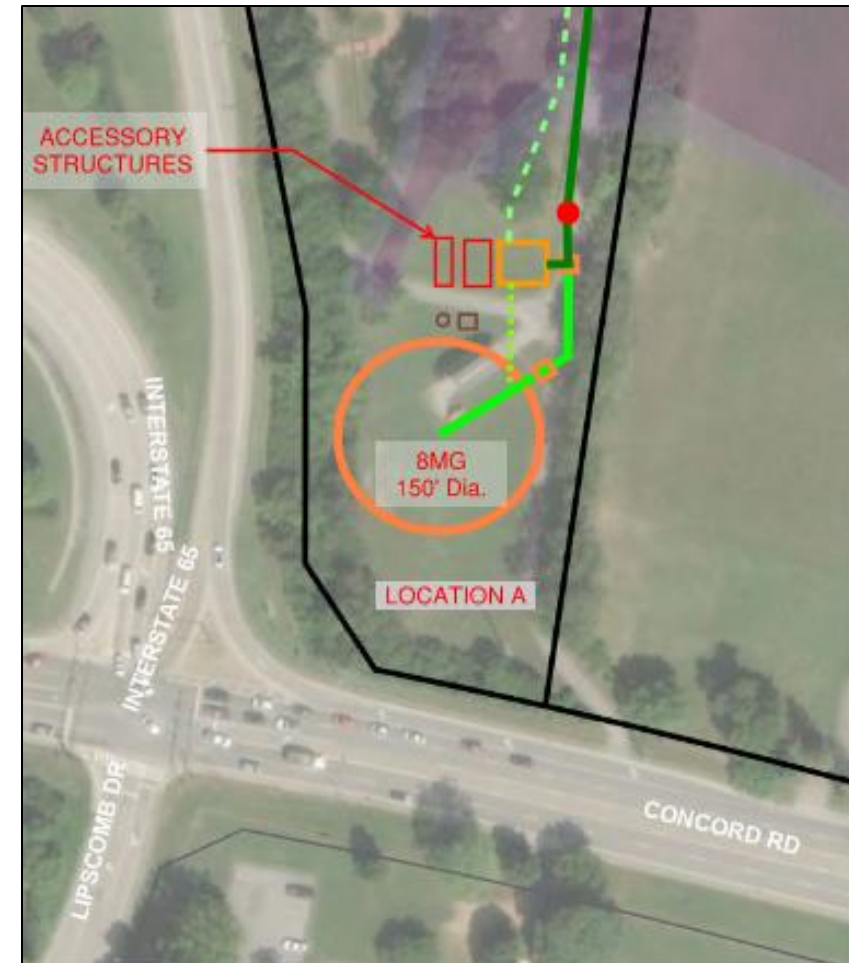
# **Location A – Tower Park South of Dog Park near Concord Road**



# Location A – Tower Park South of Dog Park near Concord Road

## Advantages / Disadvantages

- Advantages
  - City owns parcel
  - Outside of floodplain
  - Does not require existing dog park to be relocated
  - Outside of stream and wetland areas
  - No prehistoric burial grounds are known to exist at this location
- Disadvantages
  - Can easily be seen from Concord Rd
  - Constrained footprint will require deeper tank
  - Burying tank will require additional excavation and shoring, which will increase cost
  - Blasting may be needed for excavation if rock is encountered



# Location A – Tower Park South of Dog Park near Concord Road

View from Greenway



Partially Buried Option – Sidewall 35 ft above grade on Concord Road side



Partially Buried Option – Sidewall 15 ft above grade on Concord Road side



Deeper Bury Option – Sidewall 3 ft above grade on Concord Road side

# Location A – Tower Park South of Dog Park near Concord Road

View from Concord Road



Partially Buried Option – Sidewall 35 ft above grade on Concord Road side



Partially Buried Option – Sidewall 15 ft above grade on Concord Road side



Deeper Bury Option – Sidewall 3 ft above grade on Concord Road side

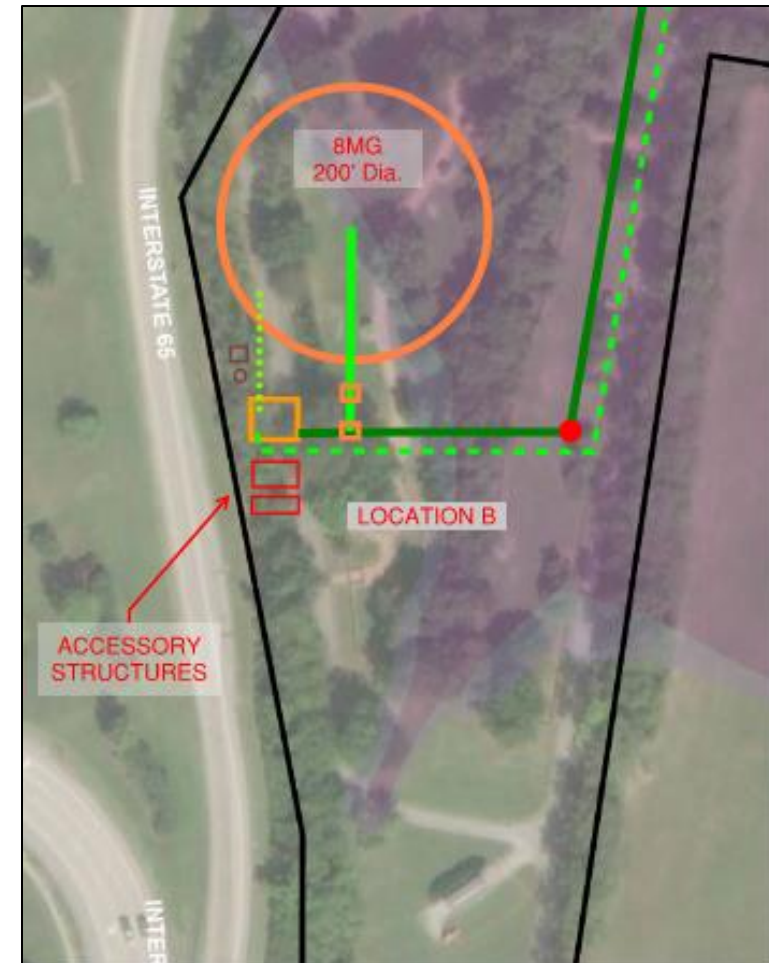
# **Location B – Tower Park Dog Park**



# Location B – Tower Park Dog Park

## Advantages / Disadvantages

- Advantages
  - City owns parcel
  - Less visible from areas outside of Tower Park including Concord Road
  - Large available footprint – tank can be shorter and wider, which would potentially have smaller pumps and less above-ground exposure
  - No prehistoric burial grounds are known to exist at this location
- Disadvantages
  - Relocation of dog park is required
  - Stream and wetland area will incur additional project cost and may limit burial depending on whether permanent stream relocation is allowed
  - Inside current floodplain – fill inside project area will require compensatory cut in area outside of project area
    - *It should be noted that a preliminary flood map revision reduces the floodplain area to outside of the proposed tank site. This could potentially eliminate this requirement.*





# Location B – Tower Park Dog Park

Partially Buried Option – Sidewalk 30 ft above grade



View from Greenway – wetland area and stream crossing sidewalk in foreground



View from I-65 On-Ramp – tank is largely hidden by fence line with trees

# Tank Exterior Ideas

# Murals

## Potential Themes

- Trees (same as West Park EQ)
- Brentwood Community, History, Achievements
- Soccer theme
- Dog Park theme
- Tennessee History



# Location A – Tower Park South of Dog Park near Concord Road

Partially Buried Option – Sidewall 35 ft above grade on Concord Road Side



View from Greenway



View from Concord Road



# Location A – Tower Park South of Dog Park near Concord Road

Partially Buried Option – Sidewall 15 ft above grade on Concord Road Side



View from Greenway



View from Concord Road

# Exterior Treatments for Decorative Purposes





## Exterior Treatments for Decorative Purposes



## Exterior Treatments for Decorative Purposes





## Exterior Treatments for Decorative Purposes



# West Park EQ Tank

